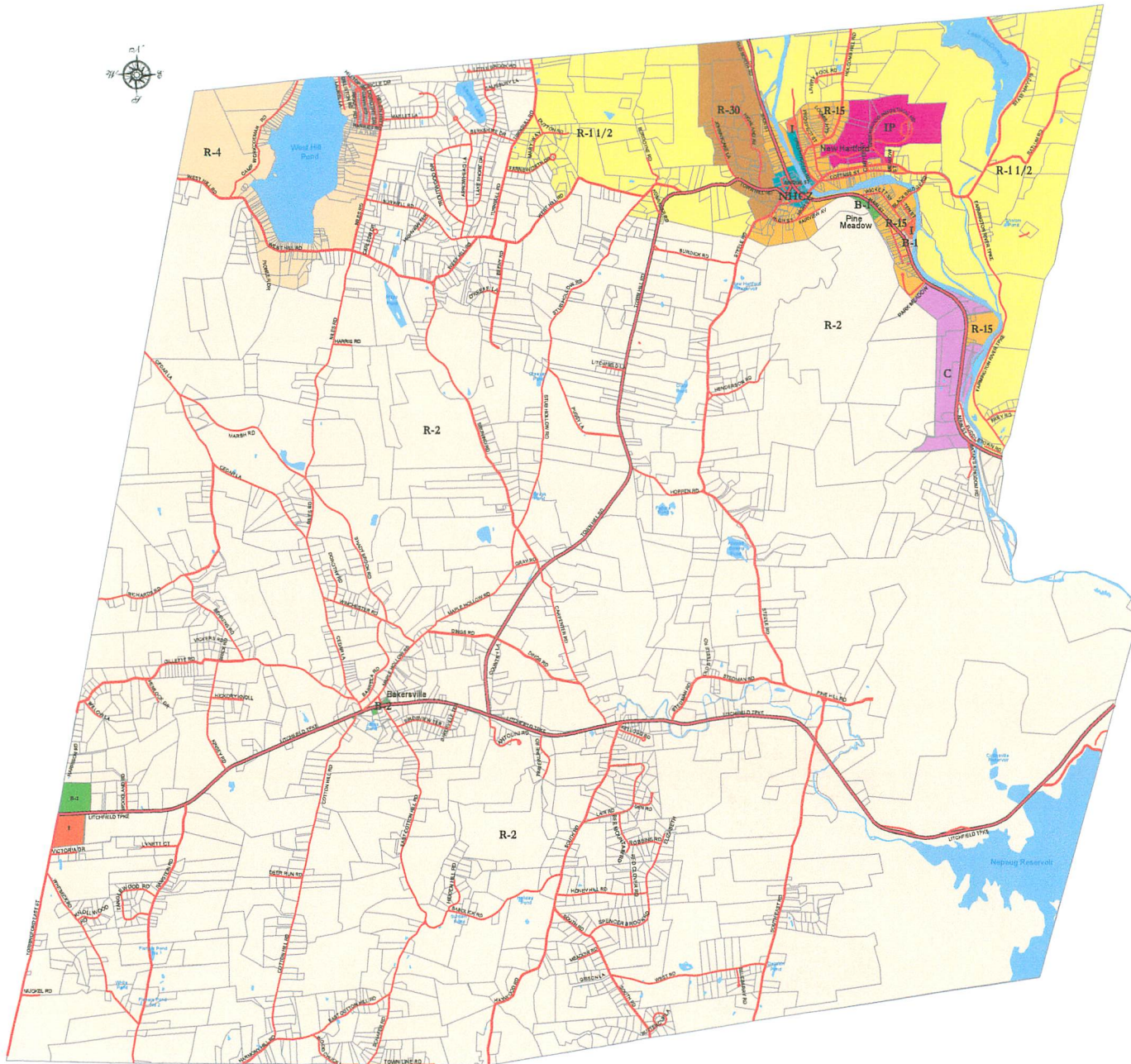


# Town of New Hartford Zoning Map



### ZONING CLASSIFICATIONS

ZONE	
B-1	BUSINESS, RESTRICTED
B-2	BUSINESS, GENERAL
C	COMMERCIAL
I	INDUSTRIAL
IP	INDUSTRIAL PARK
NH-CZ	NEW HARTFORD CENTER ZONE
R-1 1/2	RESIDENTIAL, 1 1/2 MINIMUM LOT SIZE
R-15	RESIDENTIAL, 15,000 SQ FT MINIMUM LOT SIZE
R-2	RESIDENTIAL, 2 ACRE MINIMUM LOT SIZE
R-30	RESIDENTIAL, 30,000 SQ FT MINIMUM LOT SIZE
R-4	RESIDENTIAL, 4 ACRE MINIMUM LOT SIZE
River	River

### CULTURAL FEATURES:

	PARCEL BOUNDARY
	WATER BODY: Lakes, Ponds, Streams

### ROADS AND TRANSPORTATION:

	STATE HIGHWAY
	SECONDARY HIGHWAY
	LOCAL ROAD

### Notes:

1. This map shows the locations of zoning districts designated in the Town of New Hartford Zoning Regulations as of October 10, 2007.
2. Parcel boundaries are approximate based on year 2002 Assessor's information.

Map Produced by

Town of New Hartford Land Use Office

Sources: Parcel and zoning information updated from the Town of New Hartford, February, 2004. Roads and hydrography from the UCONN Map and Geographic Information Center (MAGIC), November, 2002.

0 0.45 0.9 1.8 Miles

Visit Us At: <http://ahhowland.com> To Learn How We Can Help You With Your Next Project!